

DURA-FLEX STYLE 1100™ RUBBER EXPANSION JOINTS



Dura-Flex Style 1100™ series has been designed to compete with the imports in terms of cost, and out perform the imports with a product that's made in America. The movements and benefits match the Style 1000, if you don't need the customization options of the Style 1000.....the Style 1100 is a value packed expansion joint

The cover has been formulated with an ozone and temperature resistant compound which prevents the Dura-Flex Style 1100™ from cracking making it superior to the imports. Our new Lean Manufacturing technology provides the customer with an American Made product that has excellent performance at competitive pricing.

Due to the molded construction all face to face dimensions are standard. Engineered to withstand full vacuum and high pressure, (see next page), the Dura-Flex Style 1100™ is an excellent performer with a commodity-type price.

The drawing below shows the basic Dura-Flex Style 1100™ construction. A wide self flushing arch allows greater movement and flexibility. This series is available in sizes from 2" to 36". See next page for dimensions and movement details. Optional liners, covers, and control units are also available.

Dura-Flex Style 1100™ expansion joints offer an exceptional value by combining the best features of spool type joints with a competitive price. They are available in several common elastomer types and are usually in-stock.

The heavy-weight tube & carcass are designed to handle tough applications where chemicals and abrasives are a factor.

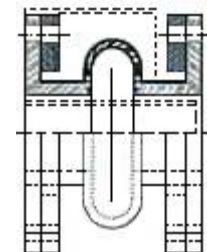
Our engineering staff can assist you with a direct replacement, new construction, or simply improved performance and/or life. Our experience in a wide variety of markets and industries helps us to design out problems before they occur. Please contact us so we may better understand your specific application.

When ordering Duraflex Style 1100™ be sure and include retaining rings and control rods unless these are being reused from the previous units. Pipe spacers and gaskets are also available. Private branding is available on larger orders.

Other rubber expansion joint product literature, including marine and Coast Guard approved rubber expansion joints, are available upon request.

HAND BUILT IN THE USA!

The Dura-Flex Style 1100™ is available in these common elastomers with multi-layer cover and tube configuration options.



■ Chlorobutyl

■ Neoprene

■ EPDM

Toll Free: 877-462-1007

Fax: 847-462-1450

24/7 Emergency Service: 847-337-9459

www.duraflexinc.com



© Copyrights 2004-2009 Duraflex, Inc.™ All rights reserved.

765 Industrial Drive

Cary, IL 60013

Em: duraflex@duraflexinc.com

S
E
R
I
E
S

1
1
0
0

W
I
D
E

A
R
C
H

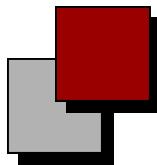
DURA-FLEX STYLE 1100™



*For Filled Arch Expansion Joints—Multiply motions by .5

Joint Size ID	Face To Face	Flange OD	Bolt Circle Dia.	No Of Bolt Holes	Bolt Hole Dia.	Ring ID	Flg Thk	Body Thk	Internal Arch Ht	Arch Width	Arch Thk	Max PSI	Axial Comp.	Axial Ext.	Trav. Defl.	Joint Wt.	Ret. Rings	Ctrl. Units
1/2	6	3-1/2	2-3/8	4	9/16	1-1/4	1/2	7/8	1	1-3/4	3/8-	225	1-3/4	3/4	3/4	1	1-1/2	6
3/4	6	3-7/8	2-3/4	4	9/16	1-5/8	1/2	7/8	1	1-3/4	3/8-	225	1-3/4	3/4	3/4	1-1/2	2	6
1	6	4-1/4	3-1/8	4	5/8	1-7/8	9/16	7/8	1	1-3/4	3/8	225	1-3/4	3/4	3/4	2	2-1/4	6
1-1/4	6	4-5/8	3-1/2	4	5/8	2-1/8	9/16	7/8	1-1/8	1-3/4	7/16	225	1-3/4	3/4	3/4	2-1/2	2-1/2	6
1-1/2	6	5	3-7/8	4	5/8	2-3/8	9/16	7/8	1-1/8	1-3/4	7/16	225	1-3/4	3/4	3/4	3	3	6
2	6	6	4-3/4	4	3/4	3-1/8	9/16	29/32	1-1/4	1-3/4	1/2	225	1-3/4	3/4	3/4	4	4	7
2-1/2	6	7	5-1/2	4	3/4	4-1/8	9/16	29/32	1-1/4	1-3/4	1/2	225	1-3/4	3/4	3/4	4-1/2	5-1/2	7
3	6	7-1/2	6	4	3/4	4-5/8	9/16	29/32	1-1/4	1-3/4	1/2	225	1-3/4	3/4	3/4	5-1/2	6	7
4	6	9	7-1/2	8	3/4	5-7/8	9/16	7/8	1-1/4	1-3/4	1/2	225	1-3/4	3/4	3/4	8	7-1/2	8
5	6	10	8-1/2	8	7/8	6-7/8	9/16	7/8	1-1/4	1-3/4	1/2	225	1-3/4	3/4	3/4	9	8	8
6	6	11	9-1/2	8	7/8	7-7/8	5/8	1	1-1/4	1-3/4	1/2	225	1-3/4	3/4	1	11	9	9
8	6	13-1/2	11-3/4	8	7/8	9-7/8	3/4	1	1-1/2	1-3/4	5/8	225	1-3/4	3/4	1	15	12	12
10	8	16	14-1/4	12	1	12-1/8	3/4	1-5/32	1-1/2	1-3/4	11/16	225	1-3/4	3/4	1	23	16	16
12	8	19	17	12	1	14-1/2	3/4	1-5/32	1-1/2	1-3/4	11/16	225	1-3/4	3/4	1	34	22	16
14	8	21	18-3/4	12	1-1/8	16-1/2	7/8	1-5/32	2	1-3/4	3/4	225	1-3/4	3/4	1	40	25	20
16	8	23-1/2	21-1/4	16	1-1/8	18-1/2	7/8	1-5/32	2	1-3/4	3/4	160	1-3/4	3/4	1	47	27	20
18	8	25	22-3/4	16	1-1/4	20-1/2	7/8	1-5/32	2	1-3/4	3/4	160	1-3/4	3/4	1	56	29	21
20	8	27-1/2	25	20	1-1/4	22-5/8	1	1-5/32	2	1-3/4	25/32	130	1-3/4	3/4	1	67	35	21
24	10	32	29-1/2	20	1-3/8	26-5/8	1	1-5/32	2	1-3/4	25/32	130	1-3/4	1	1	79	46	32
30	10	38-3/4	36	28	1-3/8	32-7/8	1	1-3/16	2-1/4	1-3/4	13-16	100	1-3/4	1	1	117	58	32
36	10	46	42-3/4	32	1-5/8	39	1	1-3/16	2-1/4	2-1/4	13-16	100	2-1/4	1	1	143	99	43

For custom dimensions, higher pressures, larger motions, special flanges, reducers, or pre-formed offsets—please contact our engineering department for information on our Style 1000 Series.



Toll Free: 877-462-1007

Fax: 847-462-1450

24/7 Emergency Service: 847-337-9459

www.duraflexinc.com



© Copyrights 2004-2009 Duraflex, Inc.™ All rights reserved.

765 Industrial Drive

Cary, IL 60013

Em: duraflex@duraflexinc.com